

### FCC/IC

**En**

This device complies with Part 15 of the FCC and Industry Canada license-exempt RSS standards. Operation is subject to the following two conditions:

- (1) This device may not cause harmful interference, and
- (2) this device must accept any interference received, including interference that may cause undesired operation.

**FCC NOTE:** The manufacturer is not responsible for any radio or TV interference caused by unauthorized modifications to this equipment. Such modifications could void the user's authority to operate the equipment.

**NOTE:** This equipment has been tested and found to comply with the limits for a Class B digital device, pursuant to Part 15 of the FCC Rules. These limits are designed to provide reasonable protection against harmful interference in a residential installation. This equipment generates, uses and can radiate radio frequency energy, and if not installed and used in accordance with the instructions may cause harmful interference to radio communications. However, there is no guarantee interference will not occur in a particular installation. If this equipment does cause harmful interference to radio or television reception, which can be determined by turning the equipment off and on, the user is encouraged to try to correct the interference by one or more of the following measures:

- Reorient or relocate the receiving antenna.
- Increase the separation between the equipment and receiver.
- Connect the equipment into an outlet on a circuit different from which the receiver is connected.
- Consult the dealer or an experienced radio/TV technician for help.

**Important note:** To comply with the FCC RF exposure compliance requirements, no change to the antenna or the device is permitted. Any change to the antenna or the device could result in the device exceeding the RF exposure requirements and void user's authority to operate the device.

**Fr**

Cet appareil est conforme au paragraphe 15 des normes FCC et au CNR pour les appareils exempts de licence d'industrie Canada. Son utilisation est sujette aux deux conditions suivantes:

- (1) cet appareil ne doit pas occasionner de brouillage préjudiciable et
- (2) cet appareil doit accepter toutes les interférences reçues, notamment les interférences qui peuvent provoquer un fonctionnement non désiré.

**NOTE DE LA FCC :** Le fabricant n'est pas responsable des interférences sur les fréquences radioélectriques ou télévisuelles pouvant être causées par des modifications non autorisées de ce matériel. De telles modifications peuvent annuler le droit de l'utilisateur à utiliser cet appareil.

**REMARQUE :** Cet appareil a été testé et certifié conforme aux limites relatives aux appareils numériques de catégorie B définies dans le paragraphe 15 des normes FCC. Ces limites ont été définies afin de fournir une protection raisonnable contre le brouillage préjudiciable en milieu résidentiel. Cet appareil produit, utilise et peut émettre des ondes de fréquence radio et, s'il n'est pas installé et utilisé conformément aux instructions, il peut provoquer un brouillage préjudiciable aux communications radio. Il n'existe toutefois aucune garantie que des interférences ne se produiront pas au sein d'une installation donnée. Si cet appareil occasionne un brouillage préjudiciable à la réception radioélectrique ou télévisuelle, il suffit d'allumer et d'éteindre l'appareil pour déterminer sa responsabilité. Nous encourageons l'utilisateur à essayer de corriger ces interférences en appliquant une ou plusieurs des mesures suivantes:

- Reorienter ou déplacer l'antenne de réception.
- Augmenter la distance entre l'appareil et le récepteur.
- Brancher l'appareil à une prise secteur différente de celle du récepteur.
- Consulter le revendeur ou un technicien spécialisé en postes radio ou téléviseurs.

**Remarque importante :** Pour se conformer aux exigences de conformité de la FCC concernant l'exposition aux RF, aucune modification apportée à l'antenne ou au dispositif n'est autorisée. Toute modification apportée à l'antenne ou au dispositif pourrait faire en sorte que le dispositif dépasse les exigences d'exposition aux RF et pourrait annuler le droit de l'utilisateur à utiliser ce dispositif.

**Es**

Este dispositivo cumple con las Especificaciones del apartado 15 de las normas de la FCC y con las especificaciones de las normas radioeléctricas (RSS) del Ministerio de Industria de Canadá aplicables a aparatos exentos de licencia. El funcionamiento está sujeto a las siguientes dos condiciones:

- (1) este dispositivo no debe provocar interferencia perjudicial, y
- (2) este dispositivo debe aceptar toda interferencia que reciba, incluso la que pudiera causar un funcionamiento no deseado.

**NOTA DE LA FCC:** El fabricante no se hace responsable de ninguna interferencia de radio o TV ocasionada por modificaciones no autorizadas efectuadas a este equipo. Dichas modificaciones podrían anular la autoridad del usuario para utilizar el equipo.

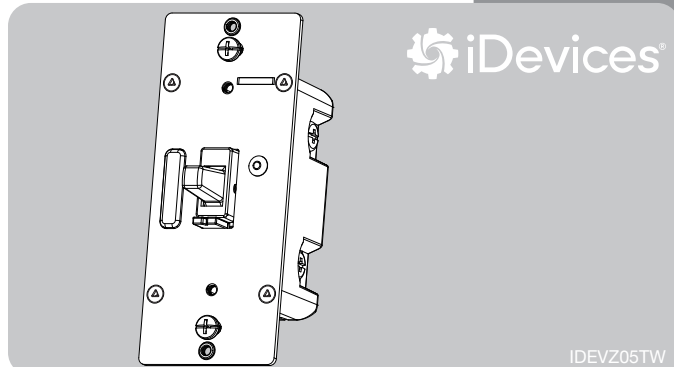
**NOTA:** Este equipo ha sido probado y cumple con los límites para aparatos digitales de Clase B, de conformidad con el apartado 15 de las normas de la FCC. Estos límites están diseñados para proveer protección razonable contra interferencias perjudiciales en una instalación residencial. Este equipo genera, usa y puede irradiar energía de radiofrecuencias, y si no se instala y usa según las instrucciones, puede provocar interferencia perjudicial a las radiocomunicaciones. No obstante, no hay garantías de que no ocurrirá interferencia en una instalación en particular. Si este equipo provoca interferencia perjudicial a la recepción de radio o televisión, lo que puede determinarse encendiendo y apagando el equipo, se recomienda que el usuario intente corregir la interferencia por medio de la implementación de una o más de las siguientes medidas:

- Reorientar o reubicar la antena receptora.
- Incrementar la separación entre el equipo y el receptor.
- Conectar el equipo a un tomacorriente de un circuito diferente del circuito al que está conectado el receptor.
- Consultar al distribuidor o a un técnico con experiencia en radio/televisión para solicitar asistencia.

**Nota importante:** Para cumplir con los requisitos de cumplimiento de exposición de radiofrecuencia de la FCC, no se permiten cambios a la antena o el dispositivo. Cualquier cambio a la antena o dispositivo podría hacer que el dispositivo supere los requerimientos de exposición de radiofrecuencia y anular la autoridad del usuario para operar el dispositivo.

**Responsible Party - US Contact Information | Parte responsable - Información de contacto de los Estados Unidos | Partie responsable - Coordonnées des États-Unis**  
 IDEVZ05TW  
 FCC ID - UZZW3011 | IC: 6924A-ZW3011  
 Wiring Devices-Kellems Hubbell Incorporated | Model: IDEVZ05TW  
 (Delaware) Shelton, CT 06484 | 1-800-288-6000  
 CAN ICES-3(B)/NMB-3(B)

## MANUAL • MANUEL • MANUAL



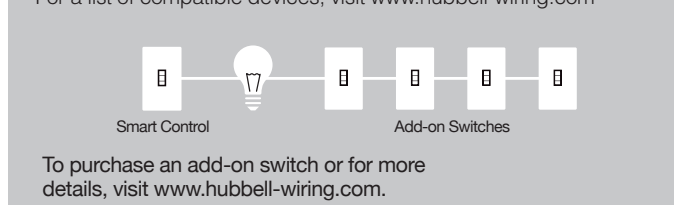
### In-Wall Smart Dimmer

### Montage mural gradateur intelligent

### Interruptor de pared reductor de luz inteligente

#### Convert any smart control\* to a multi-location switch

\*For a list of compatible devices, visit [www.hubbell-wiring.com](http://www.hubbell-wiring.com)



#### Each smart control supports up to 4 add-on switches

[www.hubbell-wiring.com](http://www.hubbell-wiring.com)



All brand names shown are trademarks of their respective owners.

MADE IN CHINA/FABRIQUÉ EN CHINE/HECHO EN CHINA  
 DISTRIBUTED BY WIRING DEVICES-KELLEMS HUBBELL INCORPORATED (DELAWARE)  
 SHELTON, CT 06484.  
 ©Hubbell | IDEVZ05TW | 03/31/22 v1

### DO NOT RETURN THIS PRODUCT TO THE STORE

### NE RETOURNEZ PAS CE PRODUIT AU MAGASIN.

### NO DEVUELVA ESTE PRODUCTO A LA TIENDA

Questions? Contact our U.S.-based Consumer Care at 1-800-288-6000.

For the most up-to-date product support, accessories, electronic (PDF) format manuals and more, visit [www.hubbell-wiring.com](http://www.hubbell-wiring.com).

- No user-serviceable parts in this unit.

Des questions? Contactez notre Service Consommateurs basé aux États-Unis au 1-800-288-6000.

Pour le soutien relatif aux produits le plus à jour, les accessoires, les manuels en format électronique (PDF) et plus encore, visitez le site [www.hubbell-wiring.com](http://www.hubbell-wiring.com).

- Aucune des pièces de ce dispositif ne peut être réparée par l'utilisateur.

Preguntas? Póngase en contacto con nuestro Servicio de Atención al Consumidor con sede en EE. UU. Al 1-800-288-6000.

Para recibir el soporte técnico más actualizado sobre productos, accesorios, manuales en formato digital (PDF), entre otros, visite [www.hubbell-wiring.com](http://www.hubbell-wiring.com).

- El sistema no contiene piezas que el usuario pueda reparar.

### WARNING

**RISK OF FIRE**  
**RISK OF ELECTRICAL SHOCK**  
**RISK OF BURNS**

**CONTROLLING APPLIANCES: CAUTION:**

TO REDUCE THE RISK OF OVERHEATING AND POSSIBLE DAMAGE TO OTHER EQUIPMENT, DO NOT INSTALL TO CONTROL RECEPTACLE, MOTOR-OPERATED APPLIANCE, FLUORESCENT LIGHTING FIXTURE OR TRANSFORMER-SUPPLIED APPLIANCE.

- ONLY USE TO CONTROL INCANDESCENT OR DIMMABLE CFL/LED BULBS
- DO NOT EXCEED RATINGS
- DO NOT USE TO CONTROL ANY DEVICE WHERE UNINTENDED OPERATION COULD CAUSE UNSAFE CONDITIONS (HEAT LAMP, SUN LAMP, ETC.)
- FOR INDOOR USE ONLY

### ADVERTENCIA

**RIESGO DE INCENDIO**  
**RIESGO DE DESCARGA ELÉCTRICA**  
**RIESGO DE QUEMADURAS**

**CONTROL DE APARATOS: PRECAUCIÓN:**

A FIN DE DISMINUIR EL RIESGO DE RECALENTAMIENTO Y DE POSIBLES DAÑOS EN LOS DEMÁS EQUIPOS, NO INSTALAR PARA CONTROLAR APARATOS QUE FUNCIONAN A MOTOR, ARTEFACTOS DE ILUMINACIÓN CON LUZ FLUORESCENTE O APARATOS ALIMENTADOS CON TRANSFORMADORES.

- USAR EXCLUSIVAMENTE PARA CONTROLAR BOMBILLAS CFL/LED INCANDESCENTES O AJUSTABLES
- NO SUPERE LOS VALORES NOMINALES ELÉCTRICOS
- NO USAR PARA CONTROLAR DISPOSITIVOS
- USE SOLAMENTE EN INTERIORES

### AVERTISSEMENT

**RISEU D'INCENDIE**  
**RISEU DE CHOC ÉLECTRIQUE**  
**RISEU DE BRÛLURES**

**COMMANDE DES APPAREILS :**  
**ATTENTION :**

GRADATEURS COMMANDANT UNE LAMPE À FILAMENT DE TUNGSTÈNE-AFIN DE RÉDUIRE LE RISQUE DE SURCHAUFFE ET LA POSSIBILITÉ D'ENDOMMAGEMENT À D'AUTRES MATÉRIELS, NE PAS INSTALLER POUR COMMANDER UNE PRISE, UN APPAREIL À MOTEUR, UNE LAMPE FLUORESCENTE OU UN APPAREIL ALIMENTÉ PAR UN TRANSFORMATEUR.

- UTILISER SEULEMENT POUR COMMANDER LES AMPÔLES À DEL ET FLUOCOOMPACTES À INCANDESCENCE OU À INTENSITÉ RÉGLABLE
- NE PAS DÉPASSER LES CARACTÉRISTIQUES NOMINALES
- NE PAS UTILISER POUR COMMANDER DES APPAREILS POUR LESQUELS UN FONCTIONNEMENT IMPRÉVU POURRAIT ENTRAINER DES CONDITIONS DANGEREUSES (LAMPE À RAYONS INFRAROUGES, LAMPE SOLAIRE, ETC.)
- POUR UTILISATION INTÉRIEURE UNIQUEMENT

**NE PAS UTILISER AVEC UN ÉQUIPEMENT MÉDICAL OU DE SURVIE**

LES DISPOSITIFS COMPATIBLES AVEC LA TECHNOLOGIE Z-WAVE NE DEVRAIENT JAMAIS ÊTRE UTILISÉS POUR ALIMENTER OU COMMANDER LA MISE EN MARCHÉ OU L'ARRÊT DE L'ÉQUIPEMENT MÉDICAL OU DE SURVIE.

**SE PROHIBE SU EMPLEO EN EQUIPO MÉDICO O EQUIPO PARA EL MANTENIMIENTO DE LAS FUNCIONES VITALES**

LOS DISPOSITIVOS Z-WAVE NUNCA SE DEBEN USAR PARA SUMINISTRAR ENERGÍA ELÉCTRICA AL EQUIPO MÉDICO O AL EQUIPO PARA EL MANTENIMIENTO DE FUNCIONES VITALES, NI PARA CONTROLAR EL ESTADO DE ENCENDIDO O APAGADO DE DICHOS EQUIPOS.

### Wiring Devices-Kellems WARRANTY

Wiring Devices-Kellems warrants this product to be free from manufacturing defects for two years from the original date of consumer purchase. This warranty is limited to the repair or replacement of this product only and does not extend to consequential or incidental damage to other products that may be used with this product. This warranty is in lieu of all other warranties, expressed or implied. Some states do not allow limitations on how long an implied warranty lasts or permit the exclusion or limitation of incidental or consequential damage, so the above limitations may not apply to you. This warranty gives you specific rights, and you may also have other rights which vary from state to state. Please contact our U.S.-based Consumer Care at 1-800-288-6000 if the unit should prove defective within the warranty period.

**GARANTIE**

Wiring Devices-Kellems garantit que ce produit est exempt de tout défaut de fabrication pour une période de deux ans à compter de la date de l'achat original par l'acheteur. Cette garantie se limite exclusivement à la réparation ou au remplacement de ce produit et n'est pas applicable aux dommages indirects ou accessoires survenus sur d'autres produits utilisés avec ce produit. Cette garantie se substitue à toute autre garantie expresse ou implicite. Certains États ne permettent pas de restrictions quant à la durée d'une garantie implicite ou permettent l'exclusion ou la limitation des dommages indirects et accessoires; il se peut, par conséquent, que cette garantie ne s'applique pas dans votre cas. Cette garantie vous confère des droits juridiques précis; vous pouvez avoir d'autres droits qui peuvent varier d'un État à l'autre. Contactez notre Service Consommateurs basé aux États-Unis au 1-800-288-6000 si l'appareil s'avère défectueux au cours de la période de garantie.

**GARANTÍA**

Wiring Devices-Kellems garantiza que este producto está libre de defectos de fabricación durante un periodo de dos años a partir de la fecha original de compra por parte del consumidor. Esta garantía se limita a la reparación o sustitución de este producto solamente y no se extiende a daños indirectos o accidentales causados a otros productos que se usen con esta unidad. Esa garantía reemplaza a todas las demás garantías expresas o implícitas. Algunos estados no autorizan limitaciones en cuanto a la duración de una garantía implícita ni permiten la exclusión o limitación por daños accidentales o derivados; por lo tanto, puede que las anteriores limitaciones no apliquen en su caso. Esta garantía le da a usted derechos específicos, y otros que usted puede tener y que varían según el estado en el que usted reside. Si la unidad resulta defectuosa dentro del periodo de garantía, comuníquese con nuestro Servicio de Atención al Consumidor con sede en EE. UU. Al 1-800-288-6000.

Wiring Devices-Kellems Hubbell Incorporated (Delaware) Shelton CT 06484.

### SPECIFICATIONS

IDEVZ05TW  
 Power: 120VAC, 60Hz  
 Signal (Frequency): 908.4/916MHz  
 Maximum loads: 1-gang 600W, 2-gang 500W or 3-gang 400W incandescent, 300W dimmable CFL/LED  
 Range: Up to 150ft. line of sight between the wireless controller and the closest Z-Wave receiver module  
 Operating temperature range: 32-104° F (0-40° C)  
 For indoor use only

Type 1 enclosure, independently mounted (vertical position only), operating control: type 1.C action, pollution degree (2), impulse voltage (2500V), software class A  
 Specifications subject to change without notice due to continuing product improvement

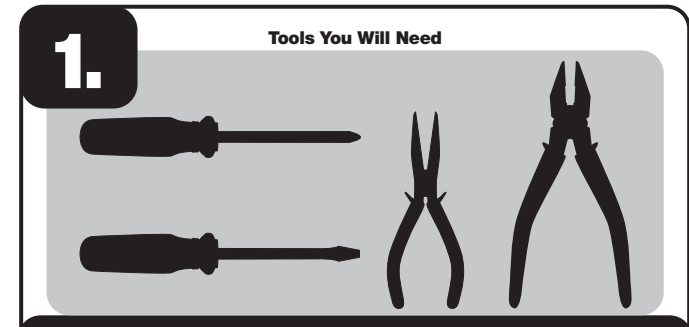
### ESPECIFICACIONES

IDEVZ05TW  
 Tensión: 120VCA, 60Hz  
 Señal (frecuencia): 908.4/916MHz  
 Cargas máximas: 1 compartimentos 600W, 2 compartimentos 500W 3 compartimentos 400W lámparas a incandescente 300W ampoules a DEL y fluorescentes a intensidad regulable  
 Portada: 150m en línea de visión directa entre el módulo de recepción Z-Wave le más próximo alantant hasta 45.7m  
 Plage de températures de fonctionnement : de 32 à 104° F (de 0 à 40° C)  
 Utilisation intérieure uniquement

Bóiler de tipo 1, monté independientemente (posición vertical solamente), intervención de tipo 1.c de comando de funcionamiento, grado de contaminación (2), tensión de choque de (2500V), logotipo de clase A  
 En raison d'améliorations continues du produit, les spécifications peuvent faire l'objet de changements sans préavis

### ESPECIFICACIONES

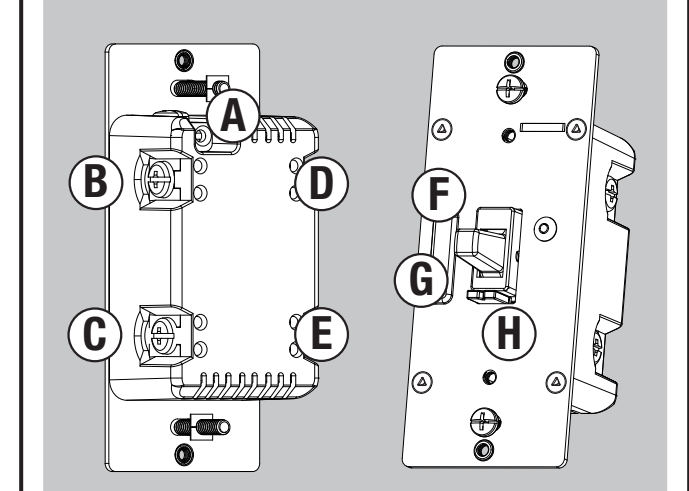
IDEVZ05TW  
 Alimentação: 120VCA, 60Hz  
 Sinal (frequência): 908.4/916MHz  
 Cargas máximas: Caja para 1 conexiones 600W, caja para 2 conexiones 500W, caja para 3 conexiones 400W sólo las lámparas incandescentes 300W CFL/LED atenuables  
 Alcance: Hasta 45.7m en línea de visión directa entre el control remoto inalámbrico y el módulo receptor Z-Wave más cercano  
 Rango de temperatura de funcionamiento: 32-104° F (0-40° C)  
 Para uso en espacios interiores solamente  
 Recinto de tipo 1, independientemente montado (solo en posición vertical), acción tipo 1.c de control de operación, grado de contaminación (2), voltaje de impulso (2500V), software de clase A  
 Especificaciones sujetas a cambio sin aviso debido a continuas mejoras del producto



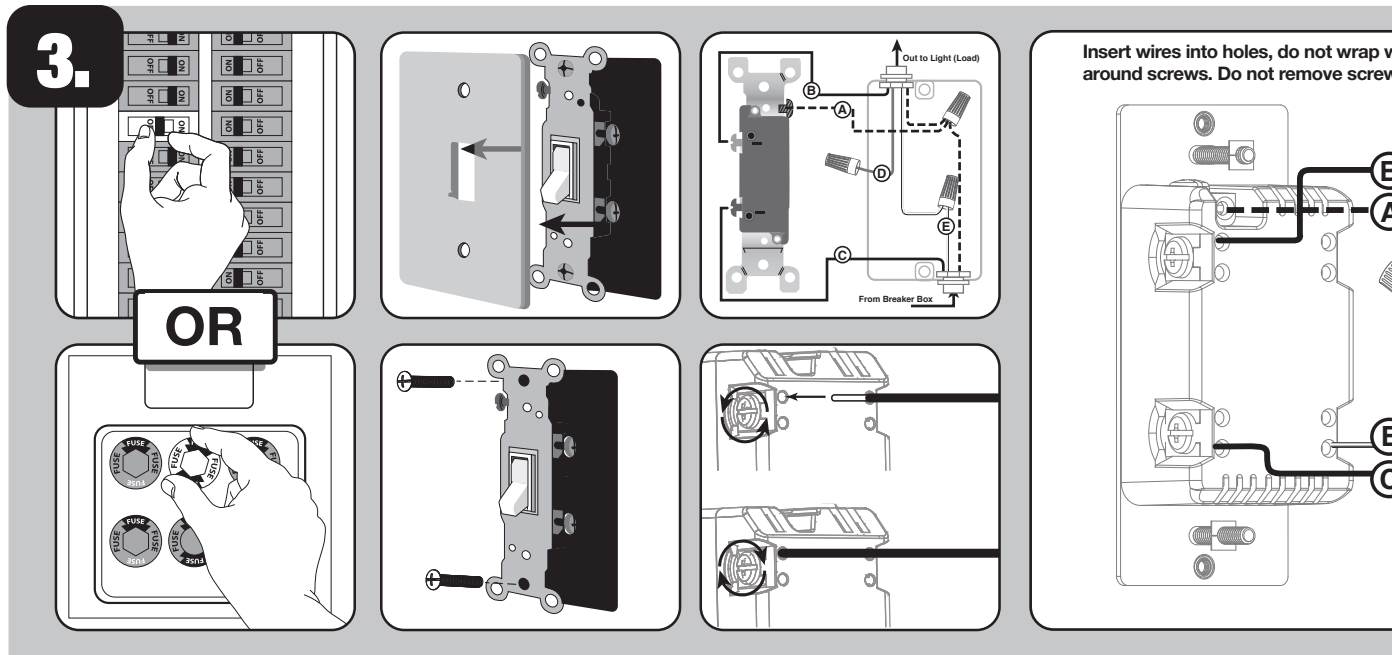
**IMPORTANT!**  
 The fixture controlled by the Z-Wave in-wall smart dimmer must not exceed 600W incandescent; 300W dimmable CFL/LED. The dimmer is designed only for use with permanently installed fixtures.

#### Getting to know your new Z-Wave device

- Turn ON/OFF and adjust dim levels manually or remotely via the Z-Wave controller
- Can be included in multiple groups and scenes
- May be used in single-pole installation or with up to four add-on switches in 3-way or 4-way wiring configurations
- Compatible with all incandescent and most dimmable CFL/LED bulbs
- Auto line/load detection
- Uses a standard toggle wallplate for single-gang installations (wallplate not included)
- Z-Wave certified for simple pairing and integrated home automation
- Screw terminal installation — requires wiring connections for line (hot), load, neutral and ground. Traveler wire required for 3-way or 4-way installation
- This Z-Wave device has advanced features that allow you to customize your experience. These features can only be adjusted by a Z-Wave enabled controller that supports the Z-Wave configuration command class. For a complete list of adjustable configurations, visit [www.hubbell-wiring.com](http://www.hubbell-wiring.com)



**A. Ground (Green/Bare)**  
**B. Line or Load (Black)**  
**C. Line or Load (Black)**  
**D. Traveler (Red/Other)**  
**E. Neutral (White)**  
**F. Up** — Press & release to turn dimmer on, press & hold to increase brightness  
**G. Down** — Press & release to turn dimmer off, press & hold to dim  
**H. Air gap** — Replace light bulb, turn off power by sliding switch to the left



### WARNING — SHOCK HAZARD

Turn OFF the power to the branch circuit for the switch and lighting fixture at the service panel. All wiring connections must be made with the POWER OFF to avoid personal injury and/or damage to the switch. This device is intended for installation in accordance with the National Electric Code and local regulations in the United States or the Canadian Electrical Code and local regulations in Canada. If you are unsure or uncomfortable about performing this installation, consult a qualified electrician.

Use 14AWG or larger wires suitable for at least 80°C for supplying line (hot), load, neutral, ground and traveler connections.  
 Wire strip length  
 Attach using the enclosure's holes, strip insulation 5/8in. (16mm).  
 UL specifies the tightening torque for the screws is 14Kgf-cm (12lb-in).

- Connect the green or bare copper ground wire to the GROUND terminal.
- Connect the black wire from the light to either LINE/LOAD terminal.
- Connect the black wire from the electrical service panel (hot) to the other LINE/LOAD terminal.
- Connect the white wire to the NEUTRAL terminal (use jumper wire if needed).

**NOTE: The traveler terminal is only used for 3-way or 4-way wiring and should remain unused if the switch is installed in a 2-way system (one switch & one load).**

- Insert dimmer into the switch box being careful not to pinch or crush wires.
- Dimmer must be independently mounted (vertical position only).
- Secure the dimmer to the box using the supplied screws.
- Mount the wallplate.
- Reapply power to the circuit at fuse box or circuit breaker and test the system.

#### Multi-switch wiring

For 3-way installations, please refer to iDevices add-on switch manual.

#### Single-switch wiring

- Shut off power to the circuit at circuit breaker or fuse box.
- IMPORTANT! Verify power is OFF to switch box before continuing.**
- Remove wallplate.
- Remove the switch mounting screws.
- Carefully remove the switch from the switch box. DO NOT disconnect the wires.

There are up to five screw terminals on the dimmer; these are marked:

- GROUND — Green/Bare
- LINE or LOAD — Black (connected to power or lighting)
- LINE or LOAD — Black (connected to power or lighting)
- TRAVELER — Red/Other (only in 3-way installations)
- NEUTRAL — White

Match these screw terminals to the wires connected to the existing switch.

- Disconnect the wires from the existing switch. Label wires according to the previous terminal connection.

Observe important wiring information  
**IMPORTANT!** This dimmer is rated for and intended to only be used with copper wire.  
 Wire gauge requirements

#### Basic operation

The connected light can turn ON/OFF and adjust dim levels in two ways:

- Manually from the front panel of the in-wall dimmer.
- Remotely with a Z-Wave controller.

#### Manual control

The front-panel toggle allows the user to turn ON/OFF the connected fixture.

- To turn the connected fixture ON, press up and release the toggle.
- To turn the connected fixture OFF, press down and release the toggle.

#### Adjust dim level

- To increase brightness, press up and hold the toggle.
- To decrease brightness, press down and hold the toggle.

#### Cycle LED light

LED shines behind the toggle to act as a guide light or status indicator.

**How to cycle between options:** Press up three times, then down one time quickly

- LED is OFF all the time (default)
- LED is ON all of the time (illuminates dimmer in the dark)
- LED is ON when the load is OFF (guide light in the dark)
- LED is ON when the load is ON (indicates the dimmer is ON)

#### LED bulb adjustments

Not all LED bulbs are made the same, and performance varies between dimmer brands. This can cause adverse bulb behavior, such as flickering or strobing. To account for this scenario, this dimmer features adjustable bulb and brightness thresholds to allow setting minimum and maximum levels.

#### Minimum dim threshold

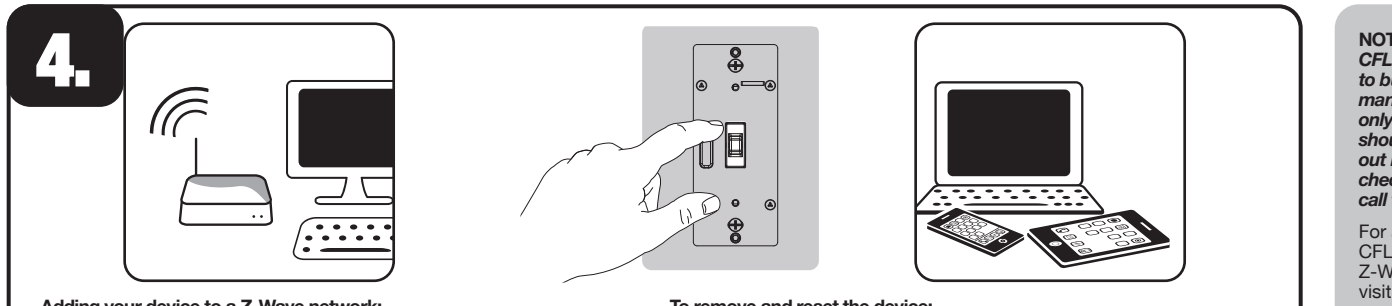
- Press OFF button four times, then ON button once quickly.
- Light starts at the most recent dim level (default — 1%).
- Press the ON or OFF button until the bulb reaches desired brightness without flickering.
- The LED stops flashing 10 seconds after releasing the button to indicate the minimum threshold is set.

**Note: This can be set by Z-Wave configuration parameter 30/size: 1 byte/values 1-99 (default — 1)**

#### Maximum brightness threshold

- Press ON button four times, then OFF button once quickly.
- Light starts at the most recent brightness (default — 99%).
- Press the ON or OFF button until the bulb reaches desired brightness without flickering.
- The LED stops flashing 10 seconds after releasing the button to indicate the maximum threshold is set.

**Note: This can be set by Z-Wave configuration parameter 31/size: 1 byte/values 1-99 (default — 99)**



#### Adding your device to a Z-Wave network:

- Follow the instructions for your Z-Wave certified controller to add a device to the Z-Wave network.
- Once the controller is ready to add your device, press up and release the toggle. Please reference the controller's manual for instructions.

You have complete control to turn your fixture ON/OFF or dim according to groups, scenes, schedules and interactive automations programmed by your controller.

If your Z-Wave certified controller features remote access, you can control your fixture from your mobile devices. If prompted by the controller to enter the S2 security code, refer to the QR code/security number on the side of the box or the QR code label on the product (see Figure 1). Enter the 5-digit pin code.

**To remove and reset the device:**

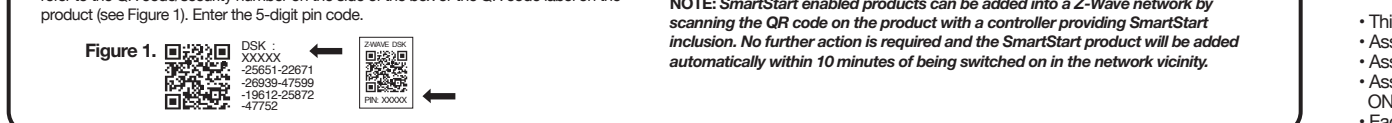
- Follow the instructions for your Z-Wave certified controller to remove a device from the Z-Wave network.
- Once the controller is ready to remove your device, press up and release the toggle.

#### To return your switch to factory defaults:

Quickly press ON (up) button three times, then immediately press the OFF (down) button three times.

**NOTE: This should only be used if your network's primary controller is missing or otherwise inoperable.**

**NOTE: SmartStart enabled products can be added into a Z-Wave network by scanning the QR code on the product with a controller providing SmartStart inclusion. No further action is required and the SmartStart product will be added automatically within 10 minutes of being switched on in the network vicinity.**



**NOTE: Actual performance of any CFL or LED will vary from bulb type to bulb type and among different manufacturers. It is important to note only bulbs designed as dimmable should be used on a dimmer. To find out if your bulb is dimmable, please check the package, the bulb itself or call the bulb manufacturer directly.**

For a complete list of recommended CFL/LED bulbs or this and other Z-Wave products from please visit [www.bjasco.com/z-wave](http://www.bjasco.com/z-wave)

**Add-on switch is required for multi-switch 3-way or 4-way installations.**

Connecting the traveler terminal of this switch to a standard switch will cause damage or result in improper function. If this switch is a part of a multi-switch installation, do not connect the traveler wire or apply power until add-on switches are correctly installed. For more information on 3-way or 4-way installations, view the manual with the add-on switch.

### Z-WAVE INTEROPERABILITY

This product can be included and operated in any Z-Wave network with other Z-Wave certified devices from other manufacturers and/or other applications. All non-battery operated nodes within the network will act as repeaters regardless of vendor to increase reliability of the network.

- This device supports Association Command Class (3 Groups)
- Association Group 1 supports Lifeline, Binary Switch Report
- Association Group 2 supports Basic Set and is controlled with the local load
- Association Group 3 supports Basic Set and is controlled by double pressing the ON or OFF button
- Each Association Group supports 5 total nodes